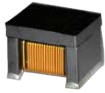


# ACMA POC Series

## Winding Type Chip Inductor

### Size 3225



#### FEATURES

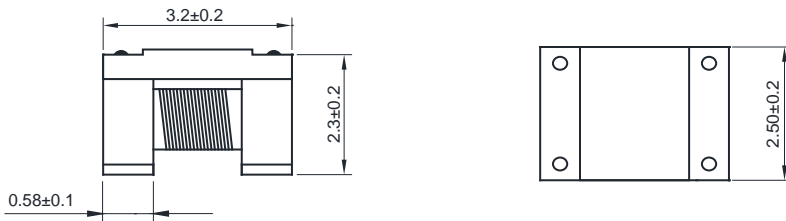
- 
- 
- 
- 
- 
- 
- 

°C

#### APPLICATION

- 
- 

Dimensions: [mm]

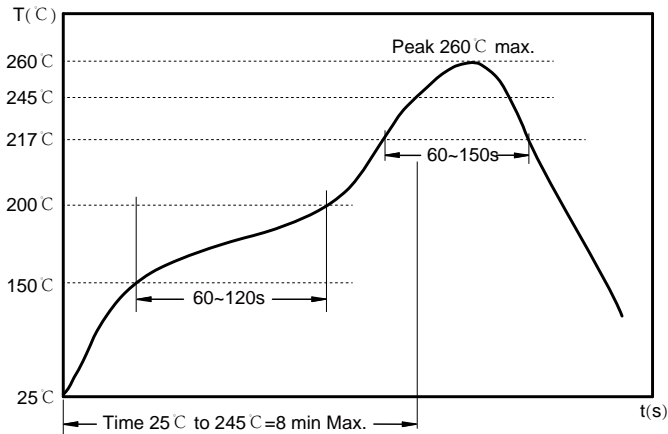


Electrical Properties:

|  | (μH) | DC<br>( ) | (MHz) | (mA) | (mA) |       |       |
|--|------|-----------|-------|------|------|-------|-------|
|  |      |           |       |      | 85°C | 105°C | 125°C |
|  |      |           |       |      |      |       |       |
|  |      |           |       |      |      |       |       |
|  |      |           |       |      |      |       |       |
|  |      |           |       |      |      |       |       |
|  |      |           |       |      |      |       |       |

ISAT

## Soldering Reflow:



Preheat condition: 150 ~200 C / 60~120 sec.

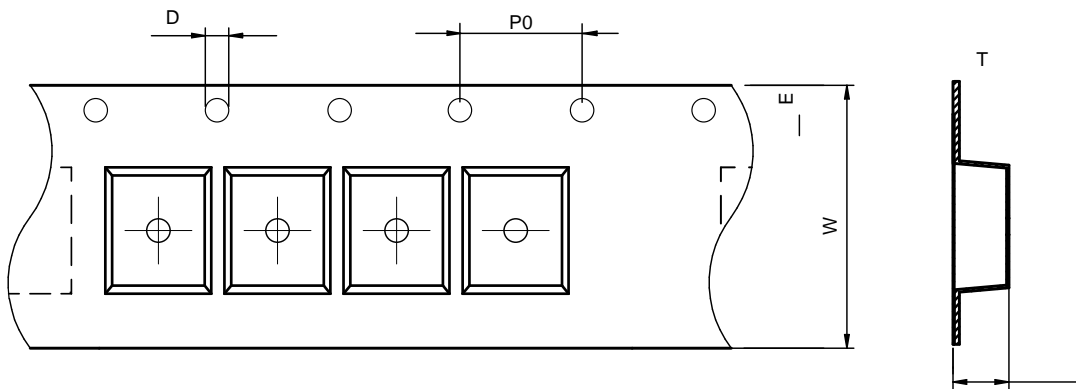
Allowed time above 217 C : 60~150 sec.

Max temperature: 260 C .

Allowed Reflow time: 3x max.

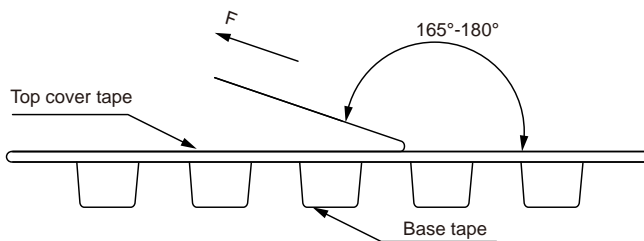
## Packaging Information:

### Tape Dimension:



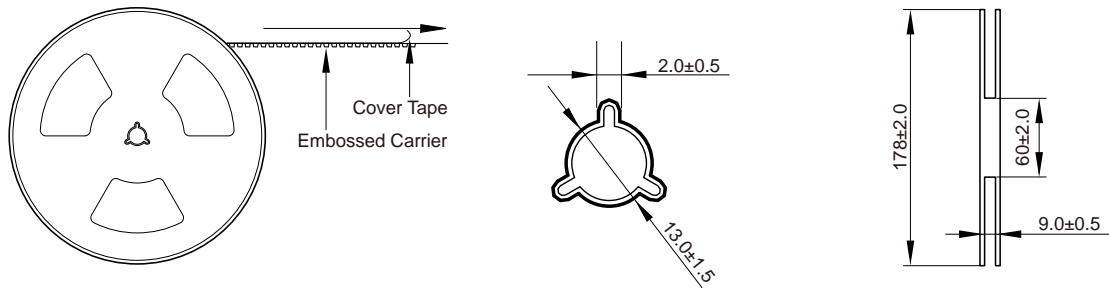
| Series      | A0 (mm)  | B0 (mm)  | D (mm)  | P0 (mm) | P1 (mm) | W (mm)  | K0 (mm)  | E (mm)   | T (mm)    |
|-------------|----------|----------|---------|---------|---------|---------|----------|----------|-----------|
| ACMA3225POC | 2.70±0.1 | 3.50±0.1 | 1.5±0.1 | 4.0±0.1 | 4.0±0.1 | 8.0±0.3 | 2.75±0.1 | 1.75±0.1 | 0.30±0.05 |

### Peel force of top cover tape:

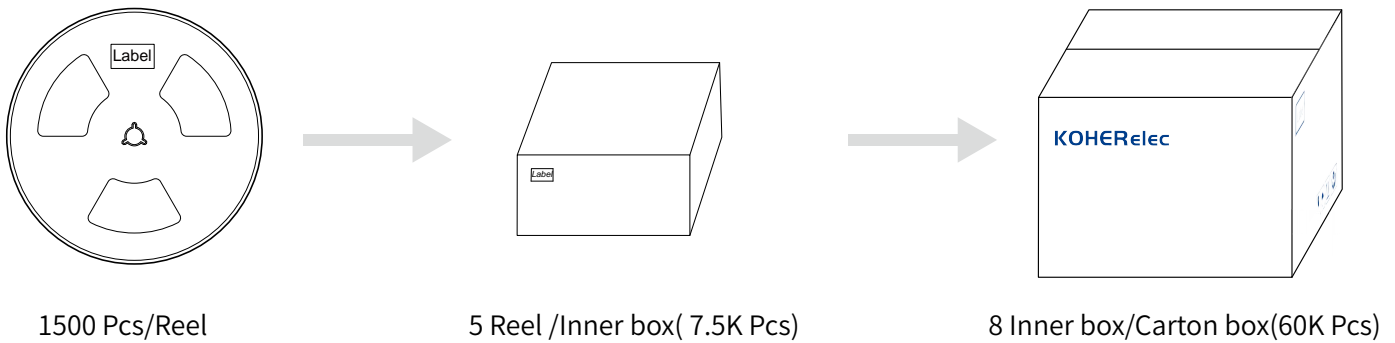


The peel force of top cover tape shall be between 0.14 to 0.78 N

## Reel Dimension: [mm]



## Packaging Quantity:



## Cautions and Warnings:

### Storage Conditions :

- The storage period is within 12 months after the completion of production. Be sure to follow the storage conditions (temperature: -5 to 35°C, humidity: 75% RH Max).If the storage period elapses, the soldering of the terminal electrodes may deteriorate.The warranty period is one year.
- Product should not be exposed to environment with high temperature, high humidity, dust, corrosive gas and etc.
- Products should be handled with care to avoid damage or contamination from perspiration and skin oils.
- Please always handle products carefully to prevent any damage caused by dropping down or inappropriate removing.

### Operation Instructions:

- Self heating (temperature increase) occurs when the power is turned ON, so the tolerance should be sufficient for the set thermal design.
- Before soldering, be sure to preheat components.The preheating temperature should be set so that the temperature difference between the solder temperature and chip temperature does not exceed 150°C.
- Soldering corrections after mounting should be within the range of the conditions determined in the specifications.If overheated, a short circuit, performance deterioration, or lifespan shortening may occur.
- Generally, Koher might not be familiar with either customer's specific application or actual requests as customer does.As a result customer shall be responsible for checking and confirming whether Koher product with the performance described in the product specification is suitable for using in customer's particular application or not.