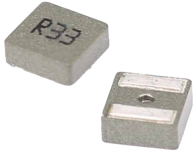


MDTE Series



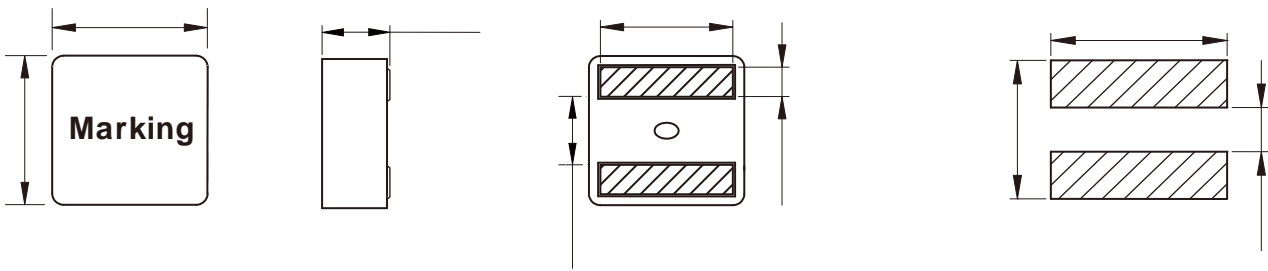
FEATURES

-
-
-
-
-
-
-

°C

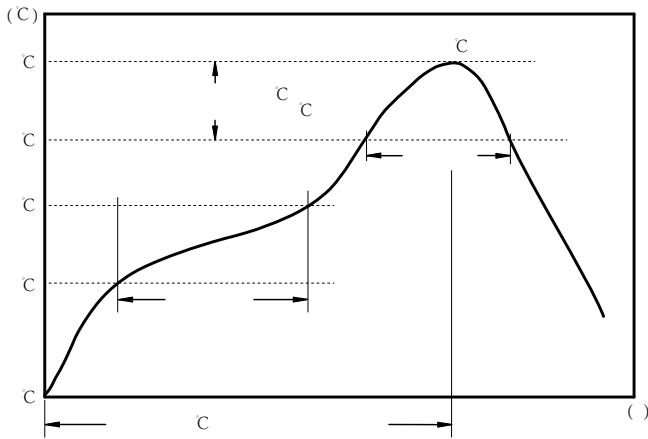
APPLICATION

-
-



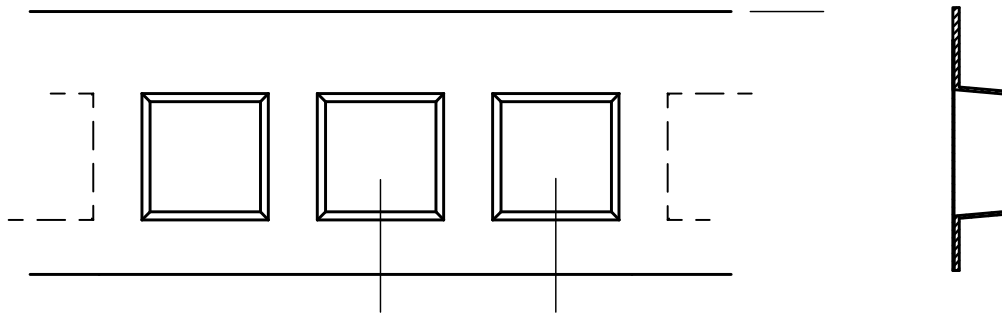
	W	D	K	Ø
	Ø	D	K	Ø
	K	D	Ø	Ø
Tolerance Dd $\overline{r\overline{D}}$	Ø	D	K	K
Dd $\overline{r\overline{D}}$	Ø	D	Ø	Ø
Dd $\overline{r\overline{D}}$	Ø	D	Ø	Ø
Dd $\overline{r\overline{D}}$	Ø	D	W	W
Dd $\overline{r\overline{D}}$	Ø	D	W	K
Dd $\overline{r\overline{D}}$	K	D	Ø	Ø
Dd $\overline{r\overline{D}}$	K	D	Ø	K
Dd $\overline{r\overline{D}}$	W	D	K	Ø



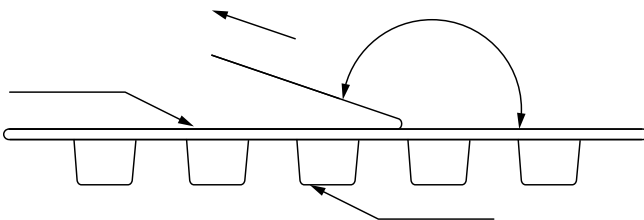


C
C
C

:



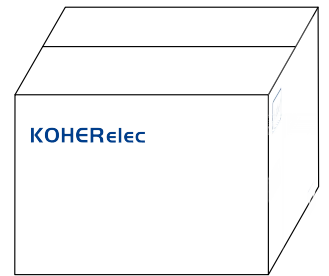
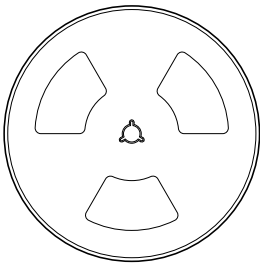
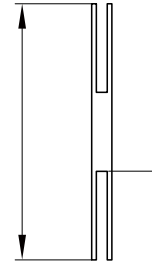
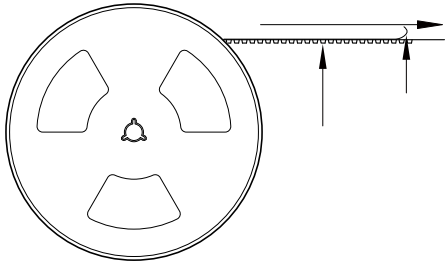
MDTE5020	6.0± 0.1	5.7± 0.1	1.5± 0.1	4.0± 0.1	8.0± 0.1	12.0± 0.3	2.3± 0.1	1.75± 0.1	0.35± 0.05



The peel force of top cover tape shall be between 0.1 to 1.3 N

Marking	Printing Inductance)
---------	----------------------

:



3000 Pcs/Reel

3 Reel /Inner box(9000 Pcs)

3 Inner box/Carton box(27K Pcs)

:

-
-
-
-
-
-
-
-
-